

# Giant Panda

**Classification :** Mammal, carnivore, Giant Panda family  
(Sometimes classified in the Raccoon family)

**Height :** 150 to 180 cm

**Weight :** 64 to 125 kg

**Habitat :** China

**Population :** about 1000

Giant Pandas live in humid bamboo forests or forests with a mix of coniferous and deciduous trees, at altitudes of 1300 to 3600 meters. Both males and females live alone most of the year, and do not hibernate like bears do. Giant Pandas sleep for 10 to 16 hours per day, and spend most of their waking hours eating bamboo shoots and leaves. Occasionally a Giant Panda will eat insects or small animals. The Giant Panda has a protrusion on its wrist, which the Giant Panda can use like a thumb. This "sixth finger" is perfect for grasping bamboo stalks. Giant Pandas are excellent tree climbers, and often climb trees to avoid enemies. However, they are not very good at climbing down from trees, and often fall in the process. Giant Pandas have black fur around their eyes and on their ears, nose, shoulders, arms, and legs. Other areas of their bodies are covered by white or cream-colored fur. Their tails are white as well.

Giant Pandas are an endangered species. It is estimated that only about 1000 Giant Pandas are living in the wild.

\* After building the Giant Panda model, you can use a black pen to cover the dotted lines in the black body areas.



## ★ Instructions

- 1) Carefully cut out the parts.
- 2) Make mountain folds and valley along the dotted lines, as indicated by the directions.
- 3) Assemble the parts in the order shown by the numbers on the glue tabs. (Read the Explanation of Symbols for more information.)
- 4) Attach the parts together in order. (Read the Explanation of Symbols for more information.)
- 5) Your Papercraft model is finished!

## ★ Tools

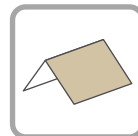
Scissors, glue (we recommend craft glue).

## ★ Caution

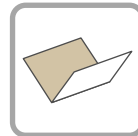
Keep glue away from small children.

Be careful not to cut your fingers when using scissors.

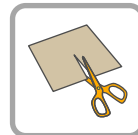
## ★ Explanation of Symbols



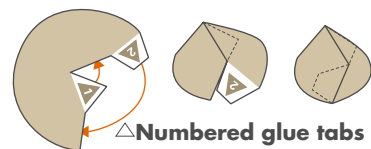
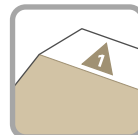
----- Mountain fold



----- Valley fold



————— Cut line



△ **Numbered glue tabs**

Assemble the parts by gluing together in the order indicated by the numbers.



**Glue tabs with part names**

These glue tabs are used for gluing to another part, as indicated by the name on the tab.

★ Build the HEAD

**1 HEAD**

**HEAD**

**2 SNOUT**

**SNOUT**

**3 EARS**

**EAR (Left)** **EAR (Right)**

**EAR (Left)** Build the EAR (Right) in the same manner.

**4 FOREHEAD**

**FOREHEAD**

**5 Glue the HEAD, SNOUT, and EARS together**

**HEAD** **SNOUT** **EAR (Right)** **FOREHEAD** **EAR (Left)**

**★ Build the BODY, ARMS, and LEGS**

**6 BACK**

**7 BELLY**

Crease along the lines before cutting out

First make a mountain fold, then reverse to a valley fold.

**8 Glue the BACK and BELLY together**

**9 ARMS (assembly)**

**ARM (Right)**

Pinch and fold.

Build the ARM (Left) in the same manner.

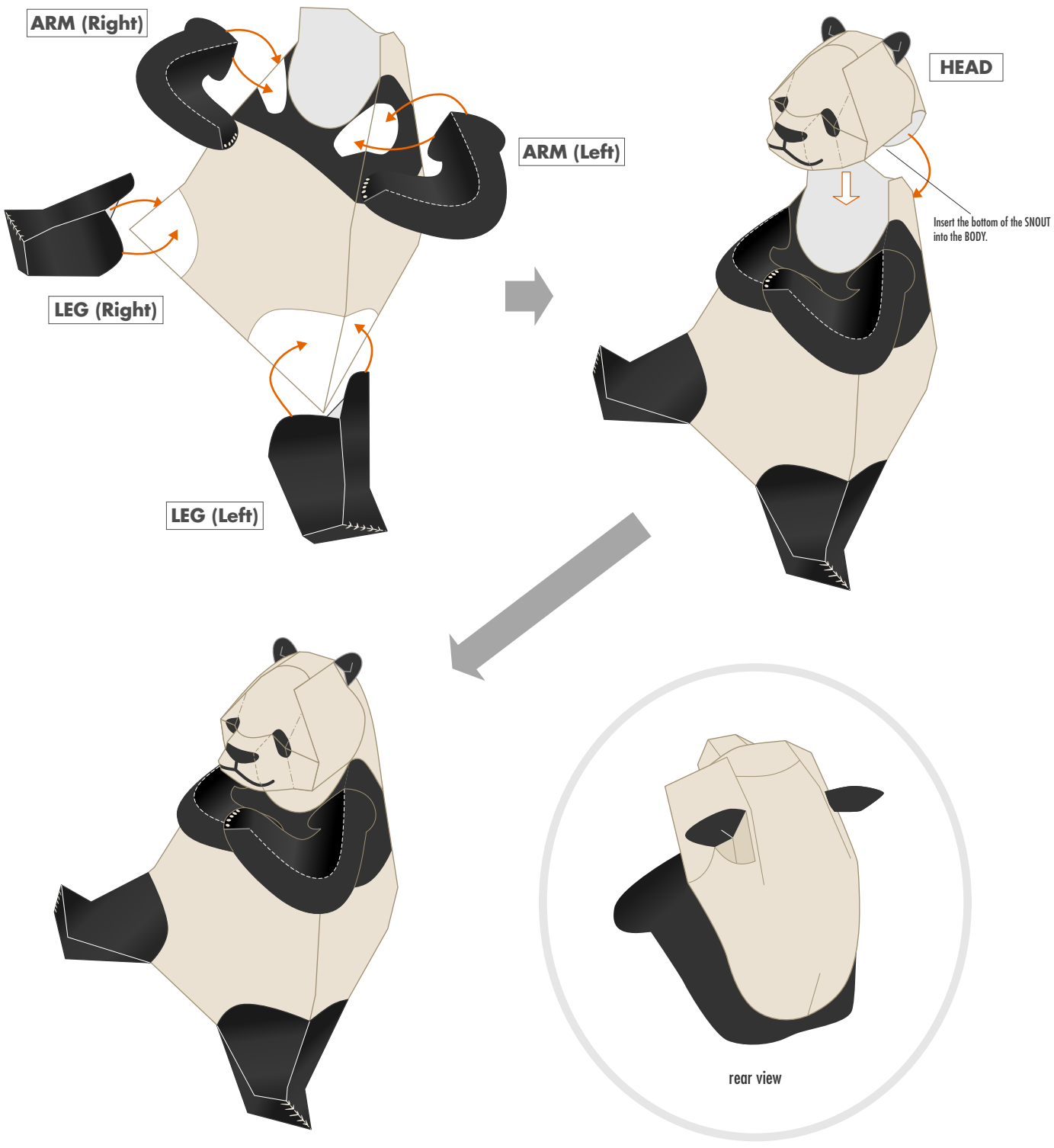
**10 LEGS (assembly)**

**LEG (Left)**

Build the LEG (Right) in the same manner.

★ Put it all together

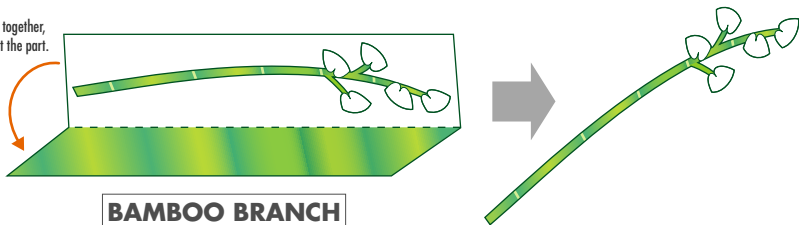
★ Final Assembly



★ Build the BAMBOO BRANCH / Completed model

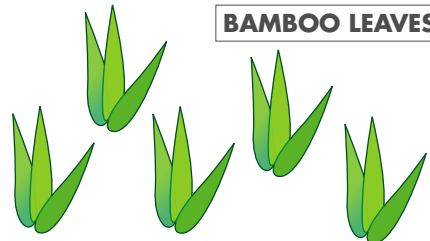
12 BAMBOO BRANCH

Fold in two and glue together, then cut out the part.

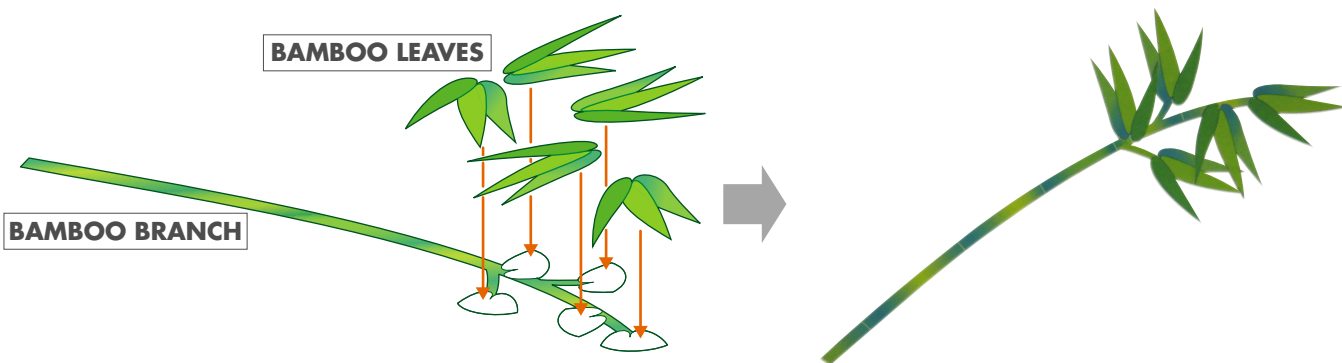


13 BAMBOO LEAVES

**BAMBOO LEAVES**



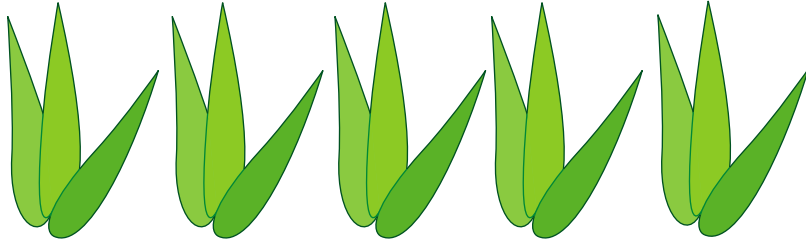
14 BAMBOO BRANCH (assembly)



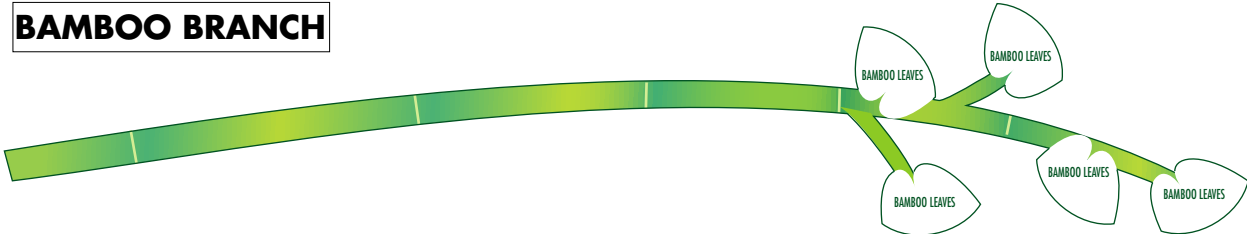
★ Completed photo



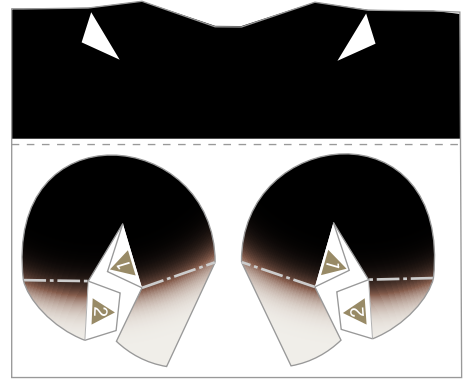
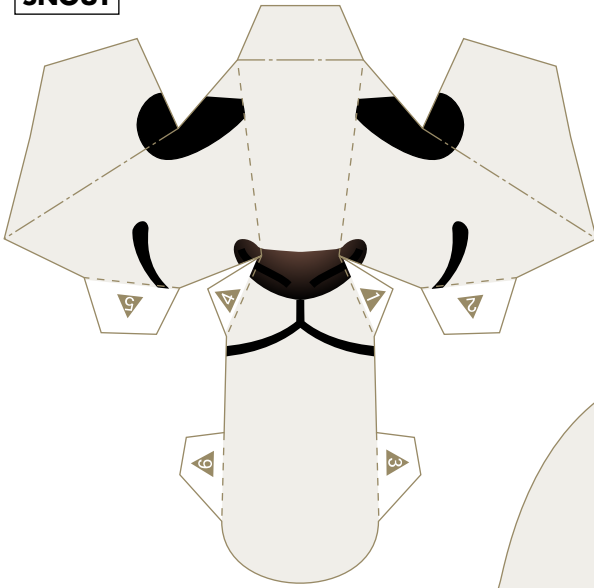
**BAMBOO LEAVES**



**BAMBOO BRANCH**



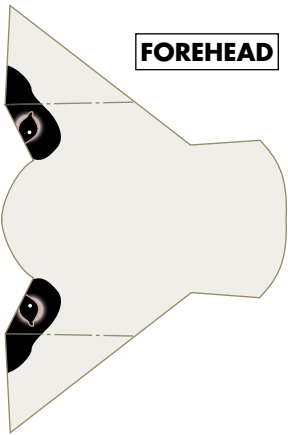
**SNOUT**



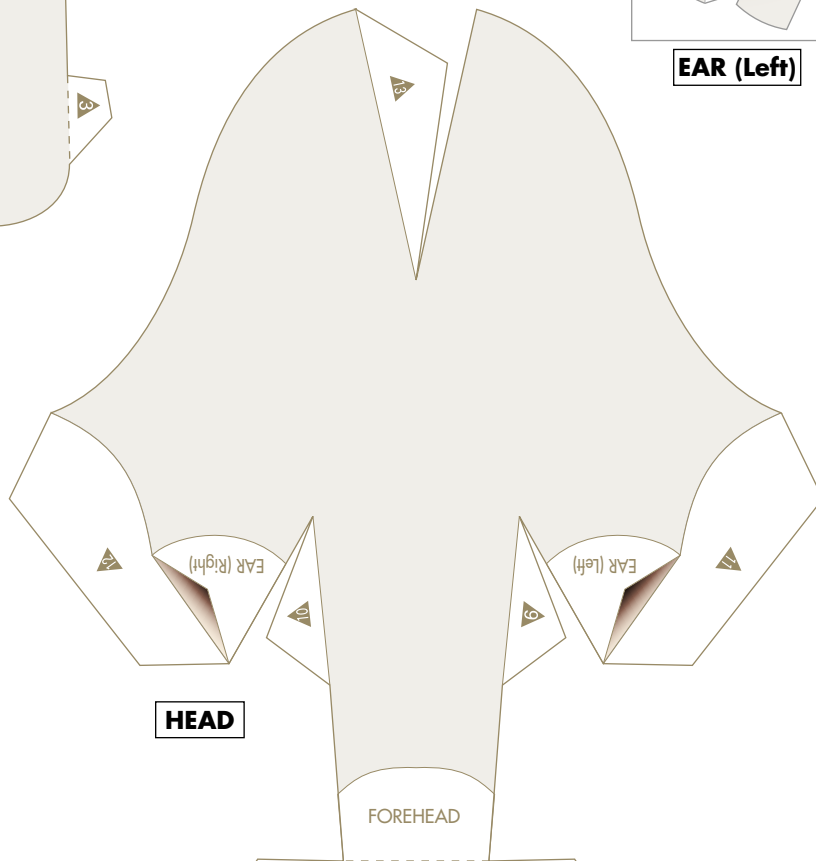
**EAR (Left)**

**EAR (Right)**

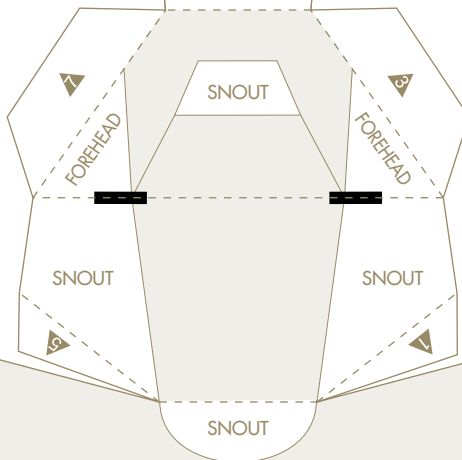
**FOREHEAD**



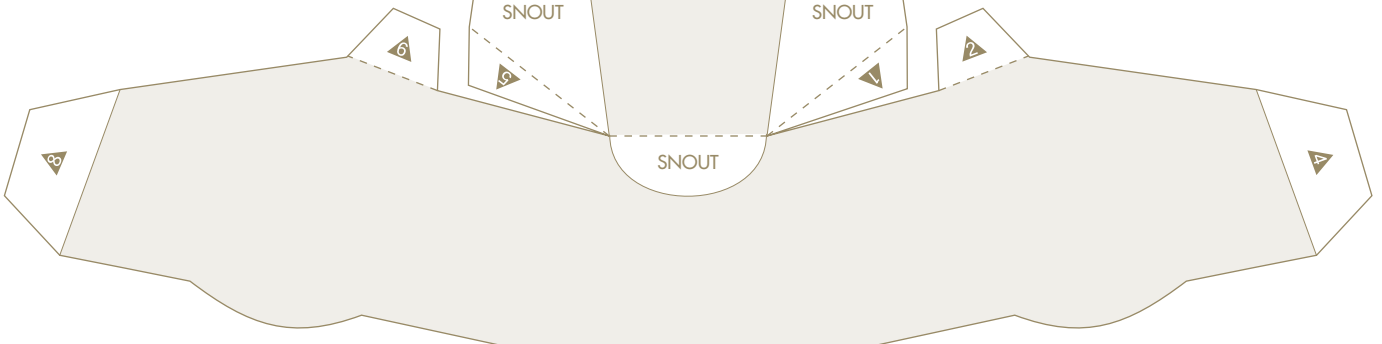
**HEAD**



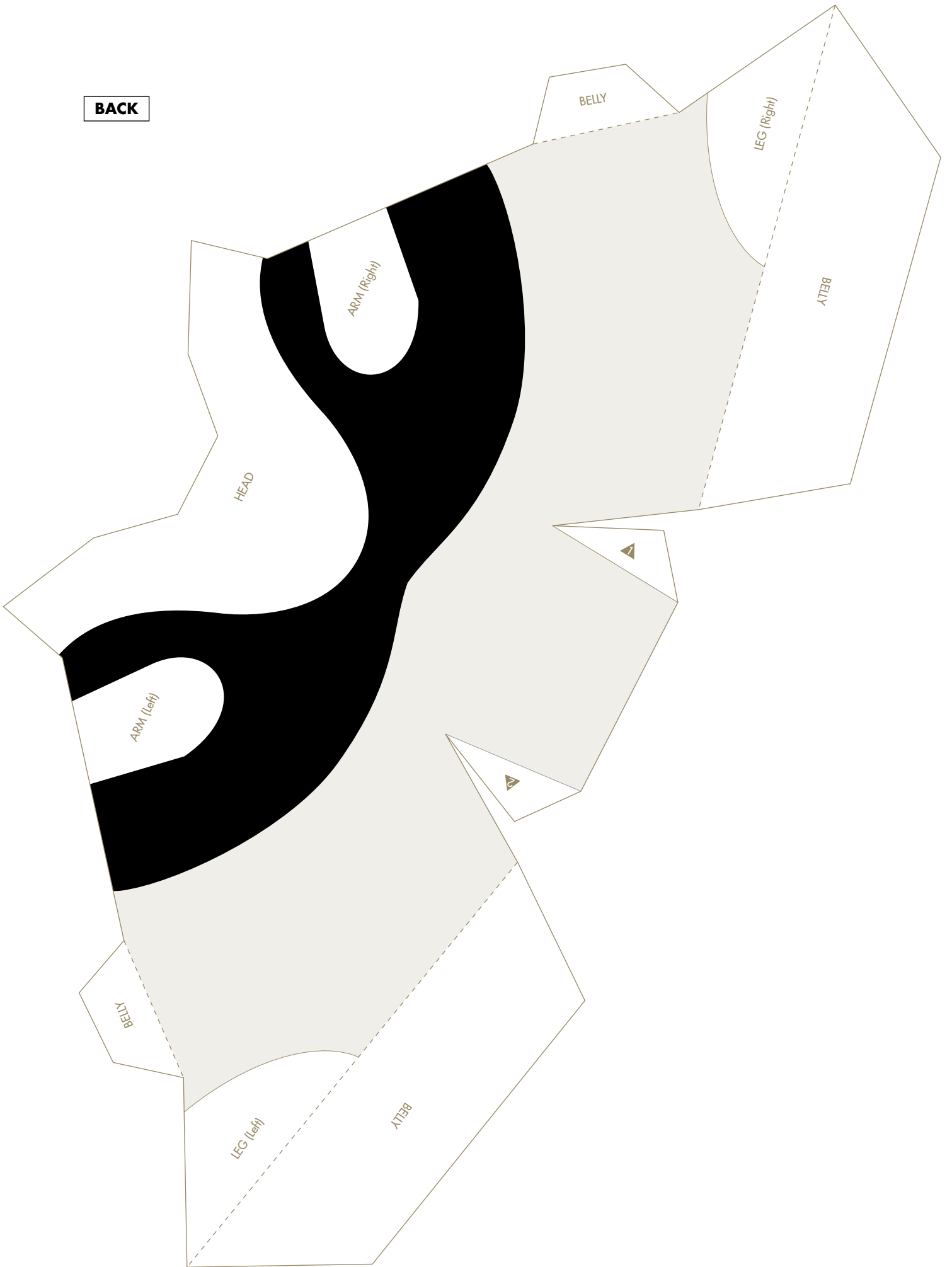
FOREHEAD



SNOUT

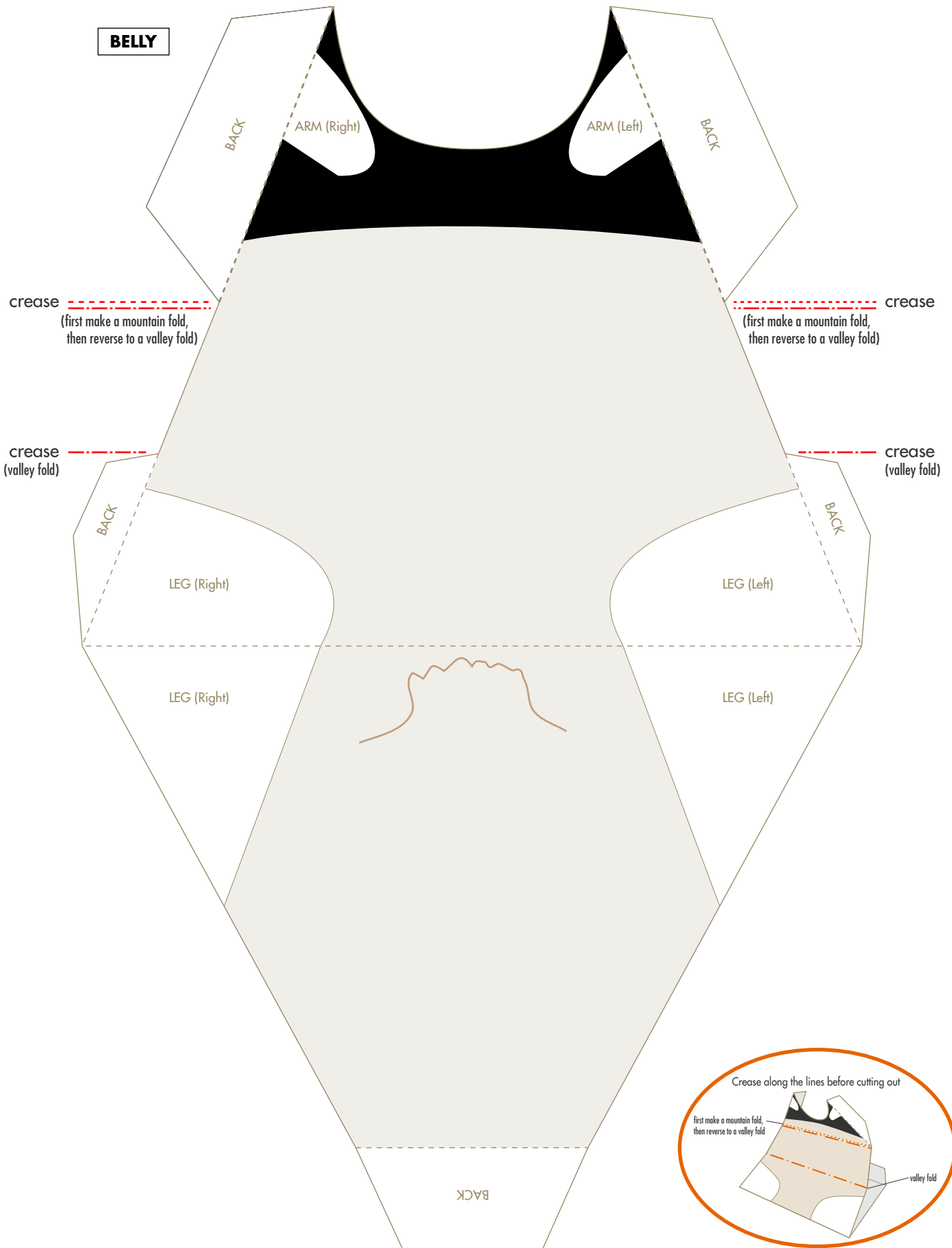


**BACK**

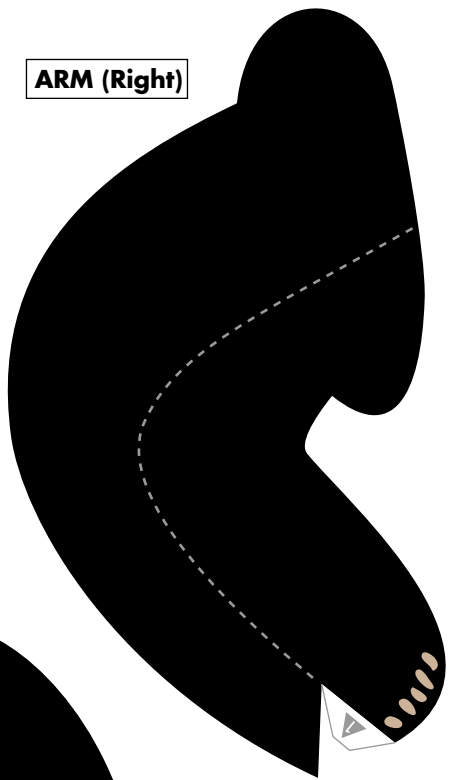




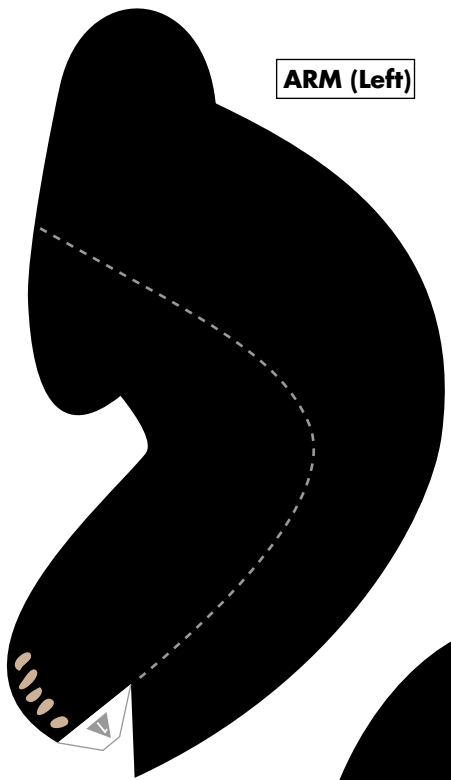
**BELLY**



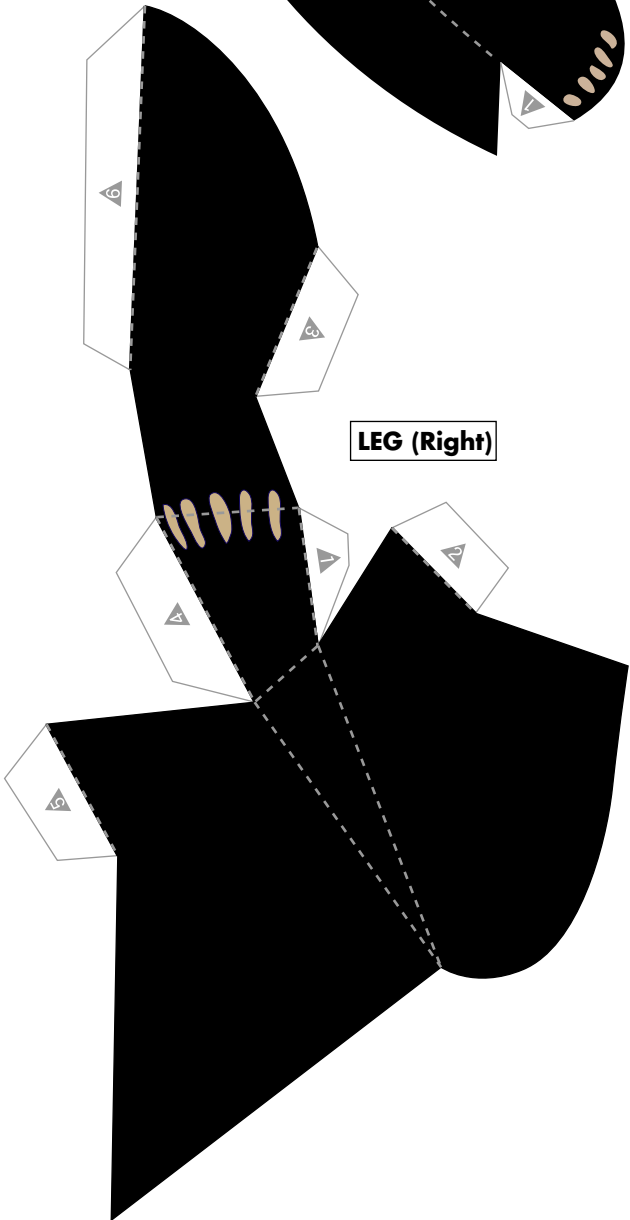
**ARM (Right)**



**ARM (Left)**



**LEG (Right)**



**LEG (Left)**

